

# Edge Data Center Management System

## CloudOpera NetEco

### Product Overview

CloudOpera NetEco is a new-generation edge data center management system developed by Huawei. It is dedicated to providing multi-network SaaS management services for customers. Unified intelligent management of edge data centers.

### Feature Benefits

#### Minimal

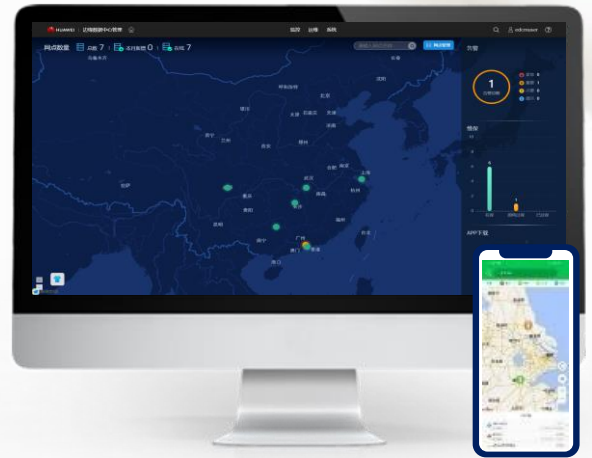
Centralized monitoring of multiple edge DC sites, fast delivery, and smooth capacity expansion, reducing TCO by 7~15%.

#### Smart

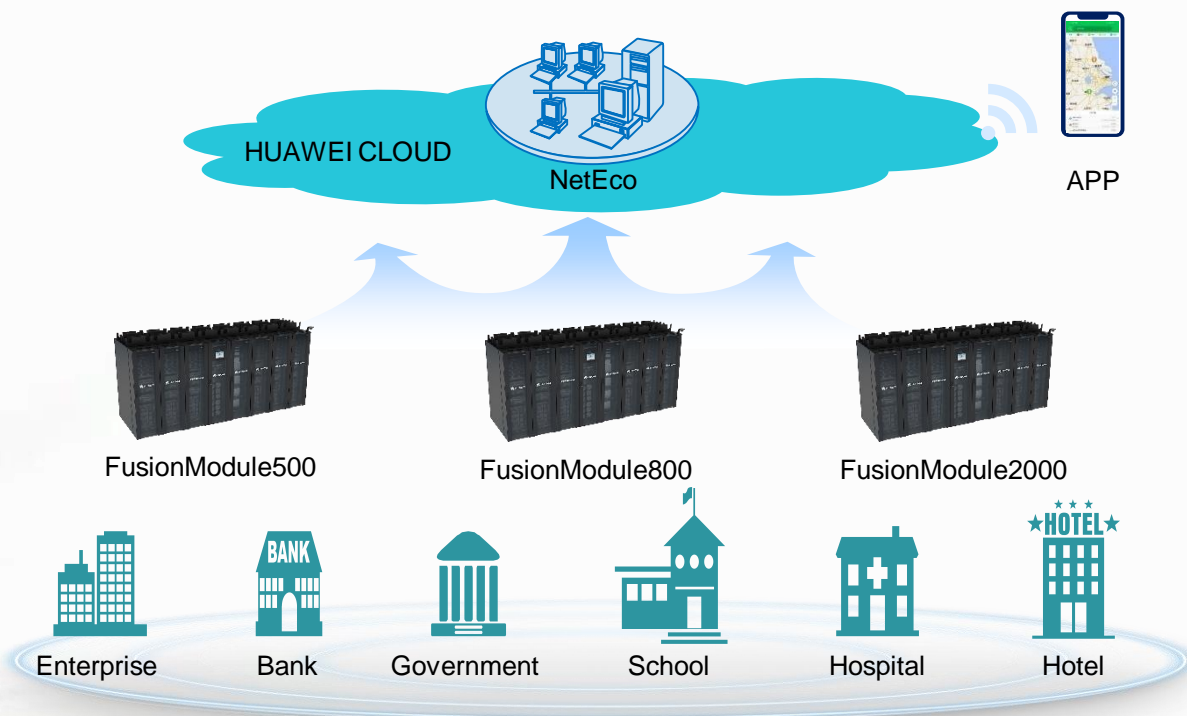
Unattended edge DC sites and remote fault analysis reduce service impact and reduce O&M costs by 75%.

#### Security

Hierarchical authorization of accounts on HUAWEI CLOUD and the cloud portal ensures customer service security.



### Application Scenario



## Product characteristics

---

Function	Description
GIS map	<ul style="list-style-type: none"><li>• GIS map, supporting map style change</li><li>• Real-time monitoring of the entire DC sites using online maps, and the location of abnormal DC sites are clearly displayed.</li></ul>
DC sites monitoring	<ul style="list-style-type: none"><li>• Provides environment monitoring, such as temperature and humidity, water immersion, smoke sensor, and surge protector.</li><li>• Information such as IT load rate and PUE can be collected.</li><li>• Monitors temperature control devices, UPSs, and PDUs.</li></ul>
Alarm management	<ul style="list-style-type: none"><li>• Allows users to browse and query current and historical alarms.</li><li>• Alarm masking is supported to reduce invalid alarms.</li><li>• The expert experience library is supported to record alarm handling experience and suggestions.</li></ul>
Security management	<ul style="list-style-type: none"><li>• Real-time video browsing</li><li>• The access control system supports fingerprint, password, and card swiping. The system also supports the alarm of illegal door opening and remote door opening.</li></ul>
Mobile Access	<ul style="list-style-type: none"><li>• Supports app alarm push.</li><li>• Allows users to view current alarms, power distribution parameters, cooling parameters, door status, and live video images.</li></ul>
O&M	<ul style="list-style-type: none"><li>• Generate sites report and view the maintenance expiration reminder of each site.</li><li>• Collects statistics on the number growth trend, number of connection sites, number of expired maintenance services, and number of about to expire.</li></ul>
User Management	<ul style="list-style-type: none"><li>• Account permissions can be assigned based on operation permissions and management areas.</li><li>• Allow users to register cloud service accounts.</li></ul>